

Dairy
powder
hydration
system

LACTEMIX

A dedicated installation for solid weighing and dissolution

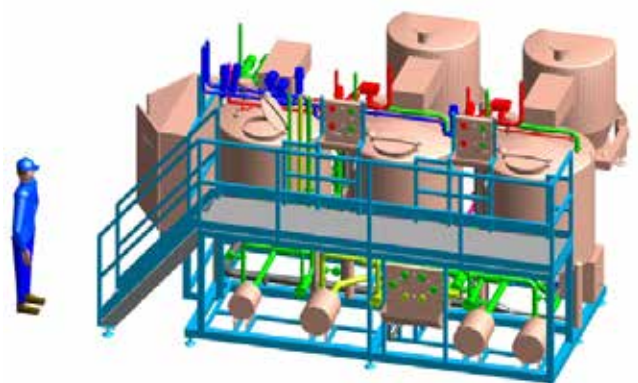
You would like to treat the powders at the heart of your dairy process: **LACTEMIX** guarantees their accurate weighing and optimized dissolution, achieving a uniform mixture.

WHAT'S IMPORTANT TO YOU

- Easy powder hydration
- Great dispersion effectiveness
- Fast achievement of a uniform mixture

ADVANTAGES

- Ergonomic design of the powder loading station
- Elimination of air introduction thanks to direct powder suction
- Reduced mixing time
- Accurate weighing for guaranteed batch-to-batch repeatability



TECHNICAL CHARACTERISTICS

LACTEMIX is a dedicated installation which optimally addresses your powder-handling expectations.

Ergonomic
Repeatable
Fast

• Ergonomic, repeatable and fast

The powder loading station is ergonomic thanks to the hopper design. Once it is opened, the side door becomes a real human-sized incorporation table.

• Powder dosage

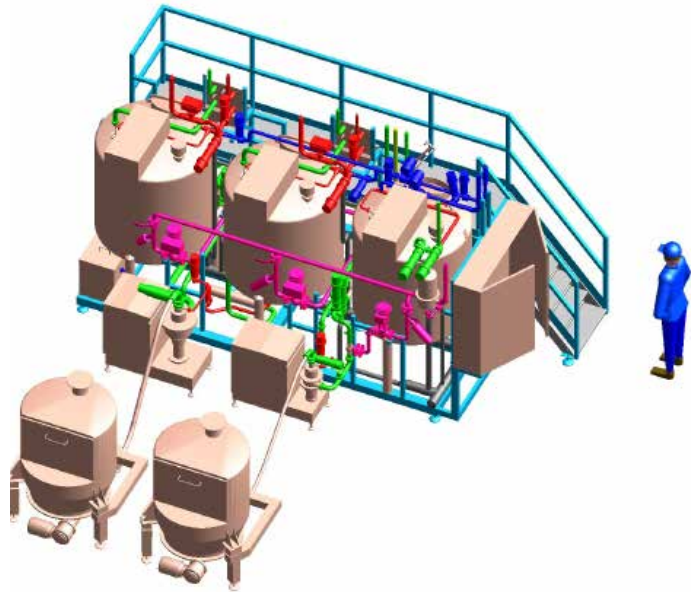
Powders are incorporated manually. The weighed quantity corresponds to the value of an executed batch.

• Foaming effect limitation: constant feeding of the mixing unit

The powder hopper's design enables a continuous clearance at a constant rate. The hose connection between the hopper and the mixing unit prevents the introduction of air, which highly limits the foaming effect.

• Quick and effective powder dispersion

Batch times are very short and hydration is almost instant thanks to the rotor/stator mixing unit and its high suction power.



PERFORMANCE

Measuring technology	Weighing
Weighing accuracy in established system	02%
Max. powder hopper volume	up to 400 kg
Storage tank volume	from 500L to 20 000L
Powder flow	from 3 to 4 t/h

APPLICATIONS

- Integration in any process involving soluble non-obstructing powders, such as sugar dosage
- Applications in any field related to powder hydration

STANDARDS AND GUIDELINES

- European Directive and CE marking
- 3A and GOST standards
- ATEX



www.boccard.com

