



UNDERSTAND
DECIDE
OPTIMIZE



TRACK ADVANCE
PERFORMANCE ASSISTANCE TECHNOLOGY

ULTRA-CUSTOMIZABLE, EXTENSIBLE AND INTEROPERABLE

CONNECTIVITY TO TRACK ADVANCE

Connect your PLC, Scada, ERP, CMMS...
and any other type of third-party applications

Track Advance supports a wide range of

- Fieldbus: ethernetIp, modbus, ...
- Database engines connectors (SQL Server, MySQL, Oracle...)
- Communication protocols (HTTP, HTTPS, Websocket, MQTT...)

CONNECTIVITY FROM TRACK ADVANCE

Accepts data from any other type
of third-party applications

- Rest API (OpenAPI 3)
- Websockets
- MQTT

VISUALIZATION

User-friendly and beautiful dashboards, reports
and graphs... built to meet the industry standards

ANALYSIS

Extract the essence of your data thanks to an advanced
data processing algorithm

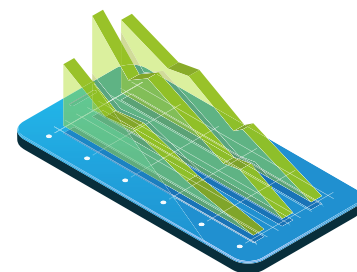
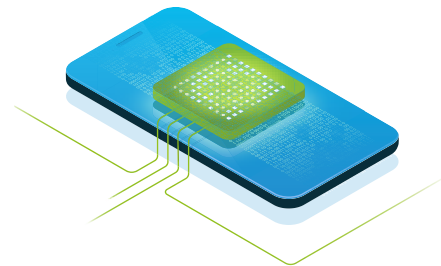
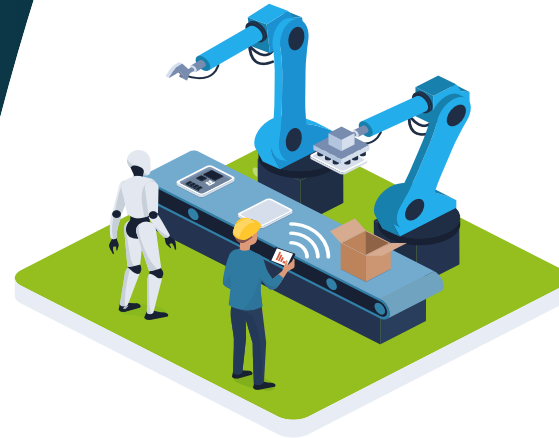
HISTORIZATION

Backup and access your data up to 5 years

DEPLOYEMENT

Fits your operational constraints:

- From a simple ultra compact PC to fully managed highly available clusters
- At Edge (on premise) or in the Cloud (public or private)



DISCOVER SMART MONITORING

Track Advance has a number of features which allow you to improve
and have better control of the overall performance of your factory.
Give all your stakeholders the ability to impact
production performance.

1. THE ESSENTIAL PARAMETERS OF YOUR PERFORMANCE, AT A GLANCE

Dashboards
Real-time data*
Customizable widgets

2. DATA-EXPLORER: A SIMPLE WAY TO ACCESS ALL THE DATA

Visualization of the collected data
Real-time data*
Save predefined profiles
Share and reuse in dashboards

3. CLEANING, PRODUCTION AND ENERGY CONSUMPTION ANALYSIS EXPERTISE

Cleaning and production reports & benchmarks

- Compliance to operating modes and standard procedures
- Monitoring « anomalies » (alarms, operator actions...)

Performance evaluation against real or theoretical
references (golden batch)

- Energy consumption
- Execution duration
- Alarms & events
- Process parameters (temperatures, flowrate, pressure...)
- Product loss

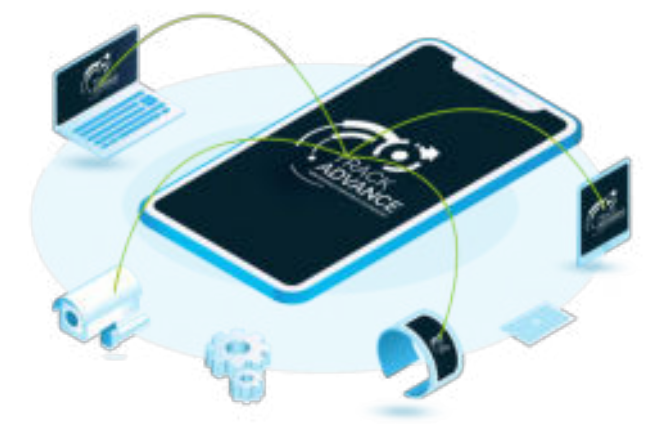
4. TRACEABILITY AND GENEALOGY: END-TO-END BATCH PRODUCTION REPORT IN FEW CLICKS

Complete ascending and descending traceability
Multiple criteria search capabilities
(batch number, raw material lot number...)

5. COMPLETE BATCH AND FORMULATION RECIPE ENGINE

No need to reinvent the wheel: leverage the power
of a proven system

- Drag and drop recipe composition
- Formula editor



*an offset of a few minutes can sometimes be observed



An innovative application, **Track Advance** allows you to compile data, to monitor the entire production cycle, and to analyze the information to sustainably optimize industrial performance.

Efficient, interconnected, accessible, secure: with **Track Advance**, you can finally take full control of your industrial performance.



**A LIVE DEMO ?
CONTACT US ON OUR WEBSITE**

WWW.TRACK-ADVANCE.COM

